



Chuck and Joan Lewis of Daughters Ridge Tree Farm named 'Maryland State 2022 Tree Farm of the Year' | page 6



A Quarterly Newsletter Providing Comprehensive News and Information for the Maryland Forest Industry and the Landowners that support sustainable forestry practices.

The CrossCut

VOLUME 45 • ISSUE 1 • WINTER 2021/2022

INSIDE THIS ISSUE

THE MOUNTAIN LOGGERS GROUP DONATE TO CHILDREN'S HOSPITAL
Page 2

UPCOMING EVENTS
Page 3, 5

TREEMENDOUS GIFTS
Page 4

ENVIRONMENTALLY-FRIENDLY LOG TREATMENT TECHNOLOGY TESTED IN MARYLAND
Page 4

DID YOU KNOW THAT COORDINATING WITH NEIGHBORS CAN BENEFIT A TIMBER SALE?
Page 6

BASELINE SUSTAINABILITY RISK ASSESSMENT OF MARYLAND'S FORESTS
Page 7

FORESTRY TAXES WEBINAR SERIES
Page 8

HEAT YOUR HOME THIS WINTER
Page 10

A message from Joe Hinson, President

Wrapping up 2021

MFA held 4 four regional meetings this fall: Western Maryland (in cooperation with the Society of American Foresters), Baltimore County, Southern Maryland, and Blackwater National Wildlife Refuge on the Eastern Shore. Yes, there was a lot of travel and a ton of logistical details to worry about, but the results were well worth the effort. I was particularly struck by the wide variety of issues, projects and forest management directions that make up the diverse "forestry" fabric of the State. Each meeting had a slightly different focus. For example, in Western Maryland, we learned about cooperative efforts with The Nature Conservancy to reintroduce fire into the Appalachian landscape. We heard about quality oak management in Central Maryland, the challenges of managing state forests in the rapidly growing Southern Maryland region, and saltwater

intrusion's effect on pine forests on the Eastern Shore. Truly a lot is going on in a state where forestry is not always at the forefront.

We also made some new friends. I was especially impressed by the attention given by Delegate Ben Brooks of Baltimore County. Although Edrich Lumber Company is in his district, I'm sure his constituents are probably a lot more worried about the issues attendant to a Baltimore suburb than they are about forest management. Yet, Delegate Brooks attended our entire meeting that day, taking notes, asking tough questions, engaging with everyone else, and paying close attention to even the most nuanced, technical presentations. One cannot ask more of our elected officials. Will Delegate Brooks become an unabashed, loyal supporter of the forest industry? Probably not, but I'm not sure we could ever ask that of anyone. However, I'll bet that



when we have an issue, he'll listen, dig as deep as necessary to gain a complete understanding, and respect our views. Sometimes you make friends one at a time, and I think that's what we did with Delegate Brooks.

Except sometimes you make them two at a time. Beth and I have become good friends with Ms. Donna Dear and Ms. Paulette Greene, owners of Mt. Pleasant Farm near Preston. These two delightful ladies maintain an organic farm with much of the vegetables they produce,

Continued on page 10



MARYLAND FIFTH GRADERS INVITED TO SUBMIT ARBOR DAY POSTERS FOR 2022

The Maryland Department of Natural Resources and Forest Conservancy District Boards invite all Maryland fifth graders in private and public schools to participate in the annual Arbor Day Poster Contest.

The theme for 2022 is: **"Trees Are Terrific...and Maryland Forests Are Too!"**

All entries must be delivered to a local Maryland Forest Service office by noon, Jan. 21, 2022.

Students are encouraged to share their appreciation for Maryland's forests and trees through original works of art. Poster size must be no smaller than 8.5 by 11 inches and no larger than 22 by 28 inches. They must be drawn in acrylic, crayon, ink, marker, paint pens, regular or colored pencil, tempera paint, or watercolor.

Contest comments or questions may be directed to Anne Gilbert at 410-260-8510 or anne.gilbert@maryland.gov.

Mountain Loggers donate yet again to WVU Medicine Children's Hospital, total now exceeds \$2 million

By: Jeena Cadigan

MORGANTOWN, W.Va. / Dec 2021 / WBOY.COM

WVU Medicine Children's Hospital accepted another donation from The Mountain Loggers Group for \$165,201.15.

Mountain Loggers has been making donations to WVU Medicine for more than 25 years. Danny Sines, president of the group said this was the best year of donations since 2006.

"The biggest contribution I think we've made is we've sponsored the cafeteria for the children's hospital," Sines said. "...Loggers are a little rough on the exterior, but they have big hearts. So, anything that has to do with children it's very easy to get the group involved with."

This year's contributions combined reached more than \$2,000,000.

"Just to see an entire group of people who have just such warm committed hearts to helping build healthier futures for our kids is unbelievable and we just appreciate their support," Amy Bush, chief operating officer WVU Medicine Children's said.

WVU Game Development Club raising money for WVU Medicine Children's through gaming

WVU Medicine is still in the process of building their new nine-story children's hospital which is tentatively set to open sometime in 2022.

"The support, especially during the pandemic, just hasn't let up and we're grateful and it's just an honor to be a part of this legacy," Bush said. "It's a onetime chance to make a difference forever for the kids."

In July, WVU Medicine Children's was named the top children's hospital in West Virginia by U.S. News & World Report.

"The loggers are a tri-state area organization and that's the same thing the hospital is trying to do to, is to take care of the tri-state community," Sines said. "So, what our organization does and what the hospital does theirs a lot of same case scenarios."

The group also collected toys throughout the year for the kids at the hospital. This year they couldn't hand them out personally but instead delivered them to staff to give out.





Executive Director's Message

Beth Hill, beth@mdforests.org

We did it. Faces of Forestry is a success!

As we entered 2021, MFA sought individuals to participate in our "Faces of Forestry" campaign. COVID-19 and closures put a few kinks in the plan along the way, but I'm happy to say that we are wrapping up the project. We highlighted some pretty amazing folks and reached thousands of people using social media. The posts have led to an increased understanding of forestry statewide and triggered some great conversations, partnerships, and unforeseen allies. I cannot remember a time when forestry had such momentum in a positive direction. People really are starting to see that there's more to our forests than trees. To keep the pushing forward will be developing a print version to distribute to lawmakers this session. If you haven't seen the profiles, visit our blog at www.mdforests.org/blog to check them out.

I feel incredibly blessed to be a part of this organization. Not only am I grateful for the longtime members and sponsors. But also for the new members. Especially those who saw the value in telling their story and trusted us to do so. I urge each of you to find your voice and tell your story. Two things that I know are true are- the squeaky wheel gets the grease, and people don't know what they don't know!

I look forward to serving you in the new year!

With Gratitude,
Beth



I'd like to give special thanks to Edwin and Lena with Remsberg Photographs, Francis Smith with DNR, and Jimmy Shue with ACDS without their hard work and dedication this project wouldn't have been possible!



Upcoming Events

**WMRC&D RISK
ASSESSMENT WEBINAR**
January 11, 2022 | 10a.m.

More info at: wmrcd.org

**2022 GENERAL ASSEMBLY
OF MARYLAND
CONVENES**
January 12-April 11

**2022 WOODLAND
STEWARDS WEBINAR
SERIES**
Jan 18, 25 & Feb. 1, 8, & 15
Tuesdays 1:00p.m.

Forestry Taxes
Learn, Plan & Save Money

Sign up at:
[www.surveymonkey.com/r/
ForestryTaxWebinars](http://www.surveymonkey.com/r/ForestryTaxWebinars)

**ARBOR DAY POSTERS
DUE**
January 31, 2022

For more information contact:
anne.gilbert@maryland.gov

**FARM BUREAU DAY IN
ANNAPOLIS**

February 9, 2022
9:00a.m. – 2:00p.m.

\$35/person
Preregistration deadline:
Friday, January 21, 2022

More info at:
[www.mdfarmbureau.com/
day-in-annapolis/](http://www.mdfarmbureau.com/day-in-annapolis/)

RURAL MARYLAND DAY
Thursday, February 10,
9:00a.m. – 1:00p.m.

Maryland General Assembly

Tree-Mendous Maryland Gift of Trees



The Maryland Department of Natural Resources offers holiday shoppers the opportunity to buy one gift for a loved one, for future generations, and for the environment. The Gift of Trees is a program where Marylanders purchase native trees — either a single tree or a grove of 10 trees — for planting in honor of a celebration, commemoration, or observation.

Your Gift of Trees order is actually three gifts - one for someone you care for, one for future generations and one for the environment.

All trees will be planted in locations that will benefit from them the most, including parks, playgrounds and schoolyards; cities and towns; and along creeks and streams. Maryland Forest Service staff help choose the appropriate location and species to best assure the tree flourishes well into the future.

To purchase a tree gift visit, www.shopdnr.com/tree-mendousmarylandgiftoftrees.aspx

Environmentally-Friendly Log Treatment Technology Tested in Upper Shore of Maryland



ELKTON, Md., Nov. 18, 2021 /PRNewswire-PRWeb/ -- The environmentally-friendly log treatment is a steam-based, non-chemical alternative to a fumigant called methyl bromide. Methyl bromide, a chemical used to control pests in agriculture and shipping, was identified as an ozone-depleting pollutant nearly two decades ago, and was phased out by the United States and the European Union for most uses, with log quarantine and pre-shipment as notable exceptions.

After more than ten years of dedicated research by Virginia Tech and the USDA Forest Service, the technology is a commercially viable solution to an industry problem. Its revolutionary process employs the application of steam and vacuum. Methyl bromide, previously used for log export sanitization, will be replaced with this more environmentally-conscious and practical science.

The steam/vacuum technology system is a scalable solution for the forest product and agricultural industries, as it's portable or stationary and chemical-free. According to the Maryland Department of Commerce, forest products represent the fifth largest industry in the state of Maryland, so the safety and accessibility of the technology could significantly benefit family farms.

On November 10, the efficacy of the treatment was put to the test. A test shipment of logs was prepared at the Mill Creek lumber site, consisting of two 20-foot containers filled with 8-foot white oak veneer logs. One container of treated logs and one container of untreated logs will ship from the Port of Baltimore to the Danzer Veneer Bohemia Mill in Melnick, Czech Republic.

The test shipment itself is a collaboration between the Upper Shore Regional Council (USRC), the Danzer Veneer Americas, Mill Creek Lumber/Polo Pallet Manufacturing Company, and Virginia Tech. Funding support is from the Rural Maryland Prosperity Investment Fund. This is the first of three quality tests slated for the steam vacuum log treatment system to take place at Mill Creek Lumber/Polo Pallet Manufacturing in Elkton.

WOMEN IN AGRICULTURE WEBINAR: INTRODUCTION TO INSECTICIDES April 13, 2022

More info at:
[extension.umd.edu/
programs/agriculture-food-
systems/program-areas/
farm-and-agribusiness-
management/women-
agriculture/webinars](https://extension.umd.edu/programs/agriculture-food-systems/program-areas/farm-and-agribusiness-management/women-agriculture/webinars)

2022 MARYLAND LAND CONSERVATION CONFERENCE June 1-2, 2022

More info at:
[forevermaryland.org/
learn/#conferences](https://forevermaryland.org/learn/#conferences)

In 2016, the Port of Baltimore closed its fumigation facility and prohibited exports using methyl bromide, following its classification as an air pollutant by the State of Maryland. As a result, veneer log exporters sought out fumigation facilities in neighboring states. Thus, there's optimism about the technology's potential to revive revenue in this sector.

After arriving in the Czech Republic, the white oak veneer logs will be inspected, tested, and sliced. Upon inspection, the quality and yield of the treated logs will be compared to the untreated logs to determine any impact of the treatment on the product itself. When the test period concludes in early 2022, the results will be documented and published.

"This is a key moment for international commerce in Maryland," said Kelly M. Schulz, Secretary of the Maryland Department of Commerce. "This innovative technology process will reestablish Maryland and the Port of Baltimore as a destination for veneer log exports, which is a billion-dollar industry in the United States."

"A recently drafted Economic Adjustment Strategy identified development of this technology as a critical component of retaining and growing Maryland's forest-based industries," said Jeannie Haddaway-Riccio, Maryland Secretary of Natural Resources. "We were pleased to support this initiative recognizing steam vacuum treatment as an environmentally-friendly method to get Maryland products to the market, potentially through our own ports."

"Sometimes it's difficult to balance sustainability with economic viability," said Susan O'Neill, Executive Director of USRC. "But with dedicated collaborators from the Upper Shore, state, higher education, and private industry partners, we can pave a way forward."

Ron Mack, Commodity Treatment Specialist for the United States Department of Agriculture (USDA APHIS CPHST) comments, "Vacuum steam treatment for export logs will help open markets again to countries in Europe and other locations where methyl bromide treated logs have been banned from being imported. Test shipments that demonstrate quality of the process to industry and regulatory authorities will help place the technology in use in the near future."

"The Port of Baltimore is one of the top ports in the nation for handling forest products," said William P. Doyle, Executive Director for the Maryland Port Administration. "Using this new environmentally-friendly and energy-efficient technology is great news and will help us attract new business opportunities and generate additional jobs."

Marshall White, who leads the research team from Virginia Tech, is thankful for the support of USRC to help advance this technology to commercialization. "I believe the Mill Creek Lumber/ PoloPallet, Danzer Veneer, USRC, and Virginia Tech collaboration will lead to economic development opportunities for the region. We look forward to future collaborations."

"I commend Polo Pallet and all the stakeholders who were vital in this effort," stated Cecil County Executive Danielle Hornberger. "This project is yet another example of how Cecil County is leading the agriculture industry in the state, country, and on an international scale."

Don Beazley, whose Mill Creek lumberyard was the site of the log test, is excited about the treatment's potential impact on small business exports. "The science behind the process has taken years to develop, but the system itself is simple to use. It's adaptability to different wood products, including the pallets we produce, can bring about new export opportunities to Maryland's small businesses."



Did you know that coordinating with neighbors can benefit a timber sale?

Daughters Ridge, the Lewis Family Tree Farm has been in operation for 21 years, and owners Chuck and Joan Lewis have called it home for 38 years, being faithful stewards to land that's been under a forest management plan for over six decades. As Carroll County forester, Donna Davis, puts it, "the farm is the perfect example of what self-motivated landowners with a passion for conservation can do with a little bit of imagination."

They acquired the Westminster parcel from Joan's father, who graduated from the University of Maryland with a degree in animal husbandry and worked on farms in Baltimore and Carroll counties as a youth before acquiring his own. Lewis' father-in-law worked with the Maryland Forest Service to prepare a woodland evaluation all the way back in 1951, and a timber stand improvement plan was recommended and completed in 1956. "He was always a good steward of the land," says Lewis. He and his wife originally built a house on her parent's farm, and as time passed, they inherited 40 acres of that 140-acre farm. "Talk about the back 40, we literally have the back 40," he jokes. The name Daughters Ridge stems from Joan's legacy from her father and now onto the couple's two daughters.

Before retiring and committing to his passion of being a good woodland steward, Lewis led a varied and incredibly interesting career and life. He received a civil engineering degree from Rochester Institute of Technology in upstate New York after being in and out of college for what Lewis quips was a 10-year bachelor's degree program. His professional life involved 10 years with the state of Maryland as project manager for its SuperFund program and then almost 30 years with the Department of Energy as

a project manager dealing with nuclear waste sites. "Project management is in my blood," Lewis says.

After quite the career path, he retired in 2012 and focused fully on his "labor of love," the family's tree farm. "It really is a passion," he says. Lewis worked with the MD Forest Service to get a Forest Stewardship Plan prepared in 1998, which was then updated in 15 years as called for. Landowner objectives are paramount for property owners entering the Tree Farm program, and his property was no different. Their goals are sustainable forest management for woodland health, forestry products, soil and water conservation, and wildlife habitat enhancement. "Once the land was in the forest management plan, then the whole world opened up to me. It became the foundation for everything I did," adds Lewis.

There is always something happening at the Lewis Tree Farm, with a multitude of forest management activities in the last five years. A timber stand improvement and thinning in an 8.5-acre stand of yellow poplar produced 8,897 board feet of saw timber, 167 tons of pulpwood, and 16 tons of scrag. All the while, the land is in a continual cycle of renewal and regeneration with 3 acres of reforestation and re-enforcement planting among mixed oak stands and edge planting of trees and shrubs to create a home for wildlife. A 3-acre wildflower/warm-season grass pollinator meadow and a 3-year invasive plants control operation across 20 acres were all part of Lewis' restoration and stewardship practices on the land.

Considering the smaller size land he's been a steward of, Lewis has achieved an incredible range of management



Chuck and Joan Lewis and family named Maryland State 2022 Tree Farm of the Year



goals and is always looking for new ways to accomplish property-wide conservation goals. For example, he is the first forest landowner in Carroll County to gain cost-share assistance through the USDA NRCS Conservation Stewardship Program Forest Enhancement Bundle. This allowed for expansion of his conservation practices to include slash reduction, planting trees and shrubs to create a soft forest edge, seeding trails and log landings for wildlife habitat improvement, designating wildlife den trees, and TSI on a yellow poplar stand.

Lewis has also built and maintained a successful relationship with adjacent landowners. Cutting down trees is often misunderstood. By being proactive and communicating with his neighbors ahead of time, Mr. Lewis was able to ward off their concerns by educating them on sustainable forestry practices. "I anticipated that if I didn't spend time at my neighbor's kitchen table that

when they heard I was going to do a forest thinning, they were going to be concerned," he says. Lewis adds that he was ultimately able to coordinate joint timber harvests with an adjacent neighbor twice, which helped generate a better volume and price.

"It's important to be working together in an era of parcelization to make logging worthwhile," he says. Lewis says he learned a lot during the harvest work, including that a small number of trees in a harvest of 400 really carry the value of the wood. "Forest is a crop on a lot longer rotation and takes a lot of planning. So if you have a good service forester as I do with Donna Davis and you have a question, just pick up the phone, and they'll help you," says Lewis.

He doesn't just see his 40 acres. Instead, he sees a contiguous 100 acres with his neighbors and tries to look at the forest on every scale. "Maryland has many forestry resources, so look holistically at what you want to do with your property. Don't unnecessarily limit your vision," he adds.

The way Lewis puts it, he's just "catching raindrops. They're all out there, you just have to pick one." Mr. and Mrs. Lewis were recently chosen as Maryland Tree Farmer of the Year and will be honored in Annapolis during the 2022 General Assembly Session.

Chuck and Joan's story is available as a Faces of Forestry story on the blog: www.mdforests.org/post/did-you-know-that-coordinating-with-neighbors-can-benefit-a-timber-sale

Baseline Sustainability Risk Assessment of Maryland's Forests

The Western Maryland Resource Conservation and Development Council (WMRC&D), with grant support from the Rural Maryland Council, has commissioned the development of a baseline risk assessment of Maryland's forest resource, against a limited range of common legality and sustainability risks associated with sourcing forest products. This risk assessment will serve as a foundational bridge from which to build stronger understanding and connection between the global business community and Maryland's responsibly managed forests. Beth Hill, Maryland Forests Association Executive, is on the Advisory Committee for the project.

First Public Consultation Now Open – Provide input!

As a first phase of this important project, a public consultation is now underway between December 15, 2021 and January 15, 2022 to gather input and information from stakeholders on the sustainability elements to be considered in the risk assessment.

1. Input Survey: Please take this short survey (www.surveymonkey.com/r/R3KRL5S) to help us prioritize the elements to be included in this limited scope risk assessment and provide your perspectives on important sustainability considerations relative to Maryland's forests. The survey should take no more than 10 minutes and is a critical source of data and information.
2. Engagement Webinar: Please join us for a webinar to introduce the risk assessment project and openly review, prioritize and gather input on the range of sustainability issues for consideration for inclusion in the risk assessment.

The webinar is scheduled for **Tuesday, January 11, 2022**, 10am EST. Register in advance for this webinar. (us02web.zoom.us/meeting/register/tZ0tc-mqqTopGNHLJznE-PBFuFCzID1S32N3)

For more information, please see our website (wmrcd.org) or contact our consulting project lead, Sarah Crow at sarah@newmarchstrategies.com.



Hunters Find Success Despite Windy Conditions

The Maryland Department of Natural Resources announced that hunters reported 10,419 deer taken on the opening weekend of the 2021 Maryland firearm season, Nov. 27-28. The overall harvest was 6% lower than last year's official opening weekend harvest of 11,123 deer, as windy conditions prevailed.

The harvest total included 4,780 antlered and 5,289 antlerless white-tailed deer, and 168 antlered and 182 antlerless sika deer.

For full results visit: <https://news.maryland.gov/dnr/2021/12/03/maryland-announces-opening-weekend-deer-firearm-season-results/>

FORESTRY TAXES

Learn, Plan & Save Money

*Join this webinar series to
learn how to save money on your timber taxes!*

TUESDAYS, 1PM ET/ 12 PM CT Jan. 18, 25 & Feb. 1, 8 & 15, 2022

1-hour sessions

Many forest landowners pay more taxes on their timber than they should. Accountants can help to calculate taxes, but forest landowners need to understand how timber expenses should be reported, and how they are taxed. When planning your forest management activities, knowing the timber tax rules will help you keep your records in line, and save you money.

Jan. 18 Seeing the Forest for the Trees: An Overview of Forestry Taxes

Join this webinar for an overview of forestry taxes including a summary of the different types of taxes that forest landowners pay, terminology used and more!

Jan. 25 Basics of Timber Basis: Re(setting) the Table:

What are the basics of timber basis? In this webinar, you will learn more about one of the most important financial aspects of timber management that often goes unnoticed or underappreciated.

Feb. 8 Timber Management Expenses and Deductions

Managing your timber costs money, and like any other business, many of your expenses can be deducted from your tax bill. In this presentation, you will learn how to assess your forest management costs and correctly claim your deductions.

Feb. 1 Keeping More of Your Timber Income Following a Timber Sale

In this presentation, there will be a detailed discussion of how to qualify for capital gain treatment under IRC 631(a) & (b), recordkeeping tips, and best practices for proper tax reporting.

Feb. 15 Coping with the Losses from Nature and Chance

Growing trees can be subject to forces beyond the owners' control from weather catastrophes to timber theft and more. Join this webinar for insights into best ways to cope with timber losses from nature and chance.

Sign up here: www.surveymonkey.com/r/ForestryTaxWebinars

This webinar series is part of the Woodland Stewards regional extension program for landowners. Created by a team of forestry Extension professionals from 10 programs, the USFS and more. This is the fourth season of the Woodland Stewards series.



WOODLAND STEWARDS

A Regional Extension Program for Landowners



Reminder to Call Before You Cut

Whatever the reason for harvesting timber, a professional forester is uniquely qualified to assist you with a timber harvest that accomplishes your needs and expectations.

Maryland has more than 2.5 million acres of woodlands, and the majority are owned and managed by private landowners. Many understand that successfully managing their property occasionally means cutting some trees for the overall health of the woods, but may have little knowledge about how best to do so.

Now they have access to a free program that can help them make informed decisions about the timber harvesting process. The "Call Before You Cut" program offers professional assistance to landowners considering timber sales. Landowners can receive complimentary information by visiting callb4ucut.com/maryland and selecting "Request Info," or by calling 301-432-2767, extension 315.

Your Membership Matters!

The Maryland Forests Association relies on the support of our members and sponsors to fund our organization and allow us to be the voice for Maryland forestry. **Please help make 2022 another successful year for membership!**

We are counting on you to renew your membership and ask that you invite your friends, family and colleagues to join us as a collective voice for Maryland forestry. Last year, your contributions helped us boost our scholarship, career camp, and general funds. Help us exceed our 2022 goals and consider a contribution in addition to your membership renewal.

We are working harder than ever to serve you better and represent Maryland's forestry industry. We cannot do this work without your support. Please look out for membership renewal letters and you can also renew online at mdforests.org. Thank you!



Your Support Makes a Difference!

2022 Membership Rates:

- Student – \$10
- Forestry Board Member – \$20
- Landowner/General Public – \$35
- Natural Resources Professional – \$60
- Hunting & Recreational Clubs – \$80*
- Businesses/Agencies/Organizations – \$150
- Sawmill – \$300

** Insurance fees must be paid directly to the insurance company, MFA processes membership only.*

Sponsor Membership Rates

MFA offers three levels of Annual Sponsorship, starting at \$600. Each level provides an membership with MFA plus additional advertising benefits.

Visit mdforests.org to learn more.

President's Message Continued...

helping feed inner-city families in the food deserts of DC and New York. Once a stop on the Underground Railroad, the property includes about thirty acres of timber which Eastern Shore Forest Products recently thinned. But far from a typical logging job, the company agreed to construct an interpretive trail as part of it to help fulfill Donna and Paulette's vision of using the farm as an educational center, dedicated to helping inner-city youth better understand agriculture and forestry and the critical role they played in sustaining Harriet Tubman and her peers. Through a growing partnership with the Maryland Forest Service and others to provide the interpretive signs and complete some strategic plantings, the trail should be ready for business next spring...and Donna and Paulette are both new MFA members!

Often in this business, we take to the woods as our source of inspiration to reaffirm our belief that the world is a pretty good place after all. But once in a while, we can get the same inspiration and reaffirmation through meeting with our peers, learning more about what we all have on our plate, and making new friends. From that standpoint, it's been a pretty good year.



Maryland
Energy
Administration

Clean Burning Wood and Pellet Stove Rebate Program

Heat Your Home This Winter

The Maryland Energy Administration wants to help you stay warm during the cold months with clean energy. The Clean Burning Wood and Pellet Stove Rebate Program provides rebates for Maryland homeowners to purchase and install an eligible clean burning wood or pellet stove at their primary place of residence.



Eligibility:

- 🔥 **Wood Burning Stove:** Under 3.0 grams of particulate matter
- 🔥 **Pellet Burning Stove:** Under 2.0 grams of particulate matter
- 🔥 Environmental Protection Agency (EPA) stove efficiency rating of at least 70%.

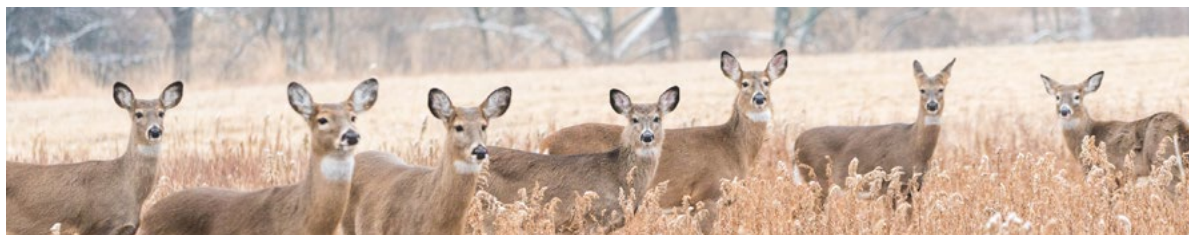
Find more information online at
Energy.Maryland.Gov

How to Apply:

Click **here** to access the application.

You can **mail** your application to:

Maryland Energy Administration
Attn: Residential Energy Rebate Program
1800 Washington Blvd, Suite 755
Baltimore, MD 21230



HUNT LEASE LIABILITY INSURANCE

for Maryland Forests Association Members

For less than the price of a new tree stand, you can protect your hunt club, all of its members and guests, and even the landowner with a \$1 million policy. Contact Outdoor Underwriters for more details and don't forget to tell them that you're an MFA member!



For more information, contact:

866 - 961 - 4101

or visit them online at: MFA.OutdoorUnd.com

Underwritten through Outdoor Underwriters, Inc.



Thank you to our sponsors!

The MFA thanks all of the companies who engage in sponsorship of the association!
Sponsors help keep our educational events affordable and improve the overall structure of the MFA.

Wye Oak Sponsors



Family Owned Since 1926



MARBIDCO
growing rural ventures™



TD Smith, LLC

Sycamore Sponsors



Dogwood Sponsors

Edrich Lumber, Inc.
Garman Brothers
GFR Forestry Consultants
Johnson Lumber Company, Inc.
McAllister & Co.
Rural Maryland Council
Timber Harvest, Inc.

For more information on sponsorship, visit mdforests.org.



Maryland Forests Association

P.O. Box 332

Linkwood, Maryland 21835



MFA Officers & Board Members

MFA Officers:

Joe Hinson, *President*

Keith Ohlinger, *Vice President*

Tim Smith, *Treasurer/Secretary*

MFA Staff:

Beth Hill, *Executive Director*

410.463.1755 • info@mdforests.org

Lindsay Ayers, *Accounting*

Megan Smith, *Membership Coordinator*

Sarah Davis, *Design Editor*

Board Members:

Todd Berman, *Pixelle Specialty Solutions*

Bill Buckel, *Rocky Resolve Tree Farm*

John Cheynet, *GFR Forestry Consultants*

James Culp, *Landowner*

Jonathan Kays, *UMD Extension*

Steve McHenry, *MARBIDCO*

Electronic CrossCut: If you are interested in receiving the next issue of CrossCut electronically, instead of print, e-mail info@mdforests.org. Please include your name, company name, and e-mail address.

Publication Notice:

We welcome your company news and updates or columns with your professional insight. Email any submissions you may have for the next edition of CrossCut to beth@mdforests.org.